



FESTIVAL MAP

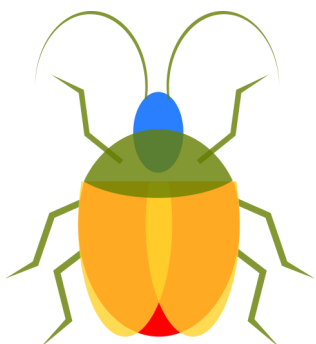
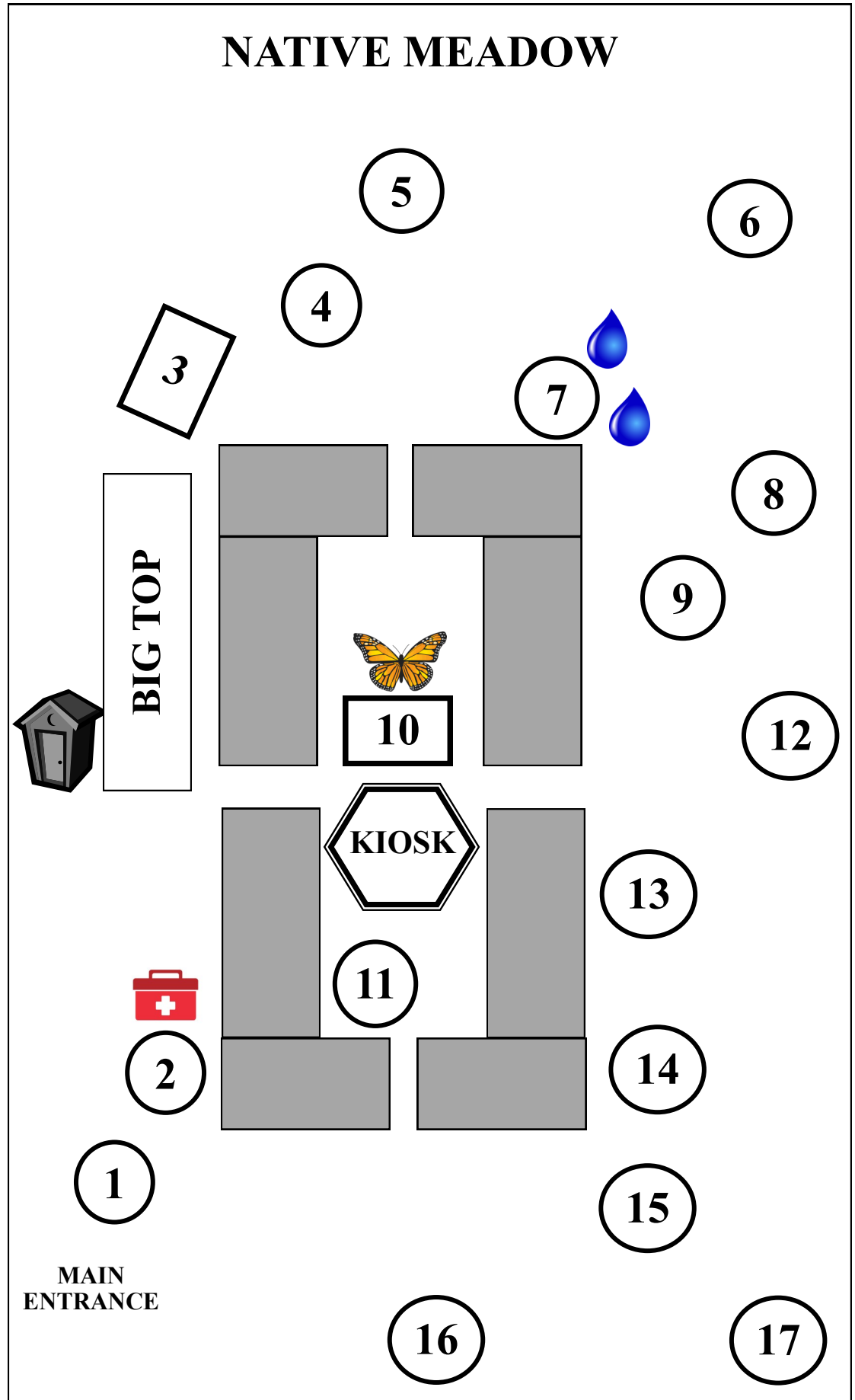


Activities

1. Welcome
2. Plant Q&A and First Aid
3. Bugs in Water
4. Crafts
5. Insect Catch & Release
6. Puppet Show
7. Water Station
8. Insect Predators: Birds
9. Insect Predators: Plants
10. Butterflies
11. Composting
12. Insect Olympics
13. Bees, Bees, Bees
14. Honey Bees
15. Native Bees
16. Metamorphosis Game
17. Scavenger Hunt

Under the Big Top

- Bugs Galore
- Hunt for Bees
- Mosquito Control
- Beneficial Insects
- Invasive Insects
- Watershed Institute



WELCOME

TO THE

2019 INSECT FESTIVAL

Ongoing Activities from 11am-2pm



Visit the Big Top Tent for Mercer County Organizations



See Reverse Side for Festival Map!

Time	Scheduled Event	Location
11:15 & 12:15	Monarch Butterfly Tagging	# 10 Butterfly Display
11:30 & 12:30	Pillowcase Lottery	# 1 Welcome Table
11:45, 12:45, 1:30	Puppet Show	# 6 Puppet Tent

Partner Agencies & Their Activities

Nick Indelicato	Mercer County Mosquito Control	Under the Big Top
Tammy Love	Watershed Institute	Under the Big Top
Cynthia Detweiler	NJDA Beneficial Insect Rearing	Under the Big Top
Maham Ali	NJDA Invasive Insects	Under the Big Top
Jenn Rogers	Mercer County Parks	#5 Insect Catch & Release
Colleen Smith	Rutgers Ecology Winfree Lab	#15 Native Bees
Curtis Crowell	NJ Beekeepers Assn.	#14 Honey Bees

For more information about the Rutgers Master Gardeners of Mercer County, MEG and our upcoming events, call the Extension Office at **(609)-989-6830**, or visit our website **mgofmc.org**

Brian M. Hughes, Mercer County Executive; Aaron T. Watson, Executive Director, Mercer County Park Commission; Dr. Brian Schilling, Director, Cooperative Extension; Chad Ripberger, County Extension Department Head

Cooperating agencies: Rutgers, the State University of New Jersey, US Department of Agriculture, and Mercer County Board of Chosen Freeholders. Rutgers Cooperative Extension is an equal opportunity program provider and employer. Contact your local Extension Office for information regarding special needs or accommodations. Contact the State Extension Director's Office if you have concerns related to discrimination, [848-932-3584](tel:848-932-3584).